

PRECISION PERFORMANCE PRODUCTS

20122 STATE RD, CERRITOS 90703
PHONE 562/402-1108 (FAX 562/402-4383)

www.precisionperformance.com

KWIK SHIFT I & II **ELECTRICAL SCHEMATIC**

KWIK SHIFT 1 WITH TRANS BRAKE SWITCH, THE TYPICAL BASIC SCHEMATIC IS TO USE A SIMPLE PUSH BUTTON STARTER SWITCH, WITH ACCESS TO BOTH TERMINALS TO BE CONNECTED AS SHOWN IN FIG. 1

KWIK SHIFT I & II WITHOUT TRANS BRAKE SWITCH IF YOU PLAN TO USE THE STOCK KEY FOR A STARTER SWITCH OR AN AFTER MARKET ELECTRICAL PANEL, YOU WILL NEED TO FOLLOW FIG. 2

NOTE: WHEN USING **KWIK SHIFT I** AND THE INTERNAL TRANS-BRAKE SWITCH AND STOCK KEY STARTER SWITCH OR AN AFTER MARKET ELECTRICAL PANEL USE THE SCHEMATIC AS SHOWN ON PAGE 2 FIG. 3

FIG. 1

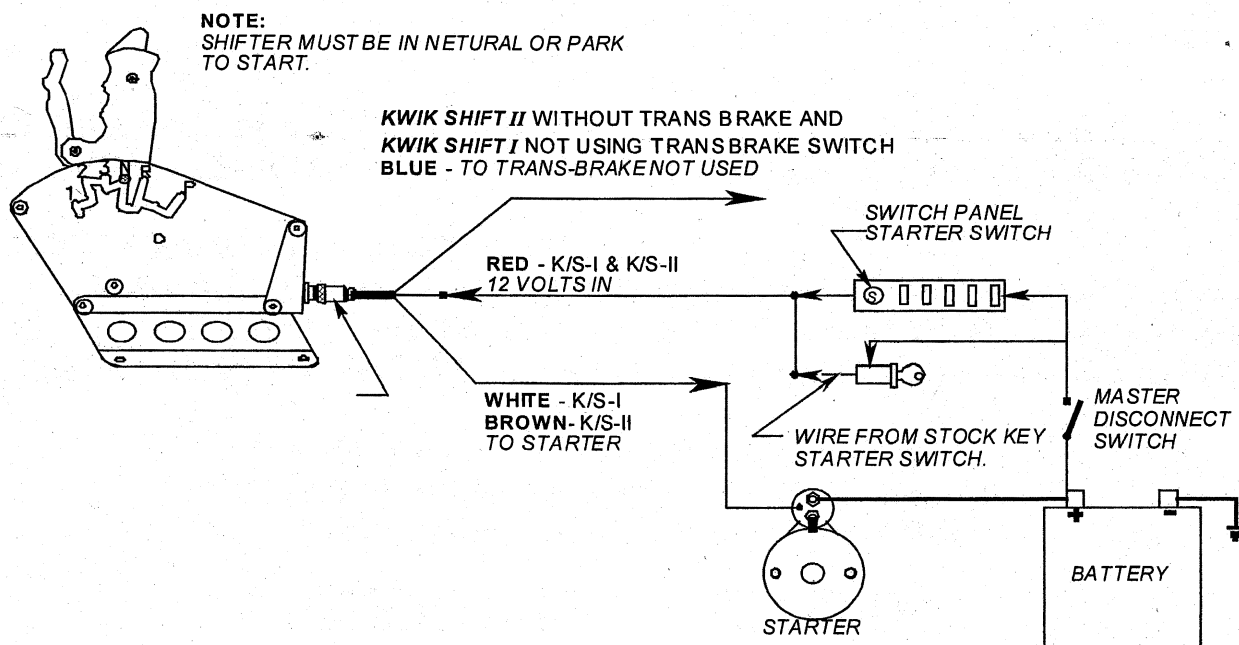
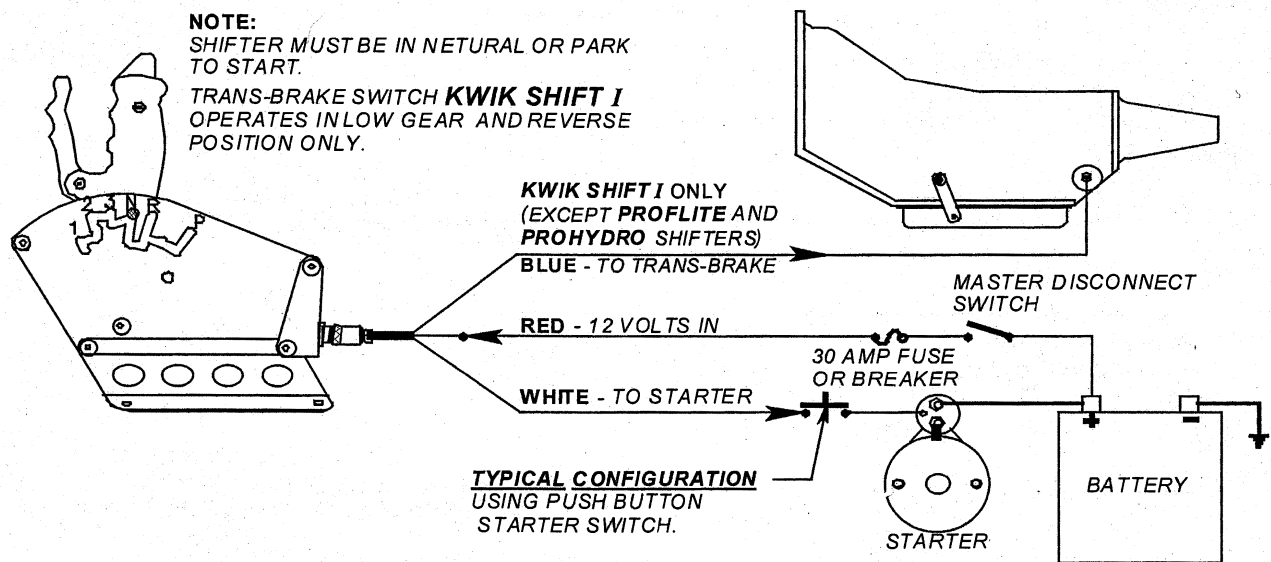


FIG. 2

KWIK SHIFT I

ELECTRICAL SCHEMATIC

WHEN USING INTERNAL TRANS BRAKE SWITCH AND STOCK KEY STARTER SWITCH OR AFTER MARKET SWITCH PANEL

MOST APPLICATIONS AS SHOWN ON OPPOSITE SIDE OF PAGE, DO NOT REQUIRE THE USE OF AN OPTIONAL RELAY, BUT IF YOU ARE USING A **KWIK SHIFT I** AND YOU ELECT TO USE THE BUILT IN TRANS BRAKE SWITCH, YOU WILL REQUIRE **PRECISION PERFORMANCE PRODUCTS RELAY #308**.

ALL OTHER SHIFTERS WITHOUT OR NOT USING THE INTERNAL TRANS BRAKE SWITCH FEATURE, DO NOT REQUIRE THE OPTIONAL RELAY.

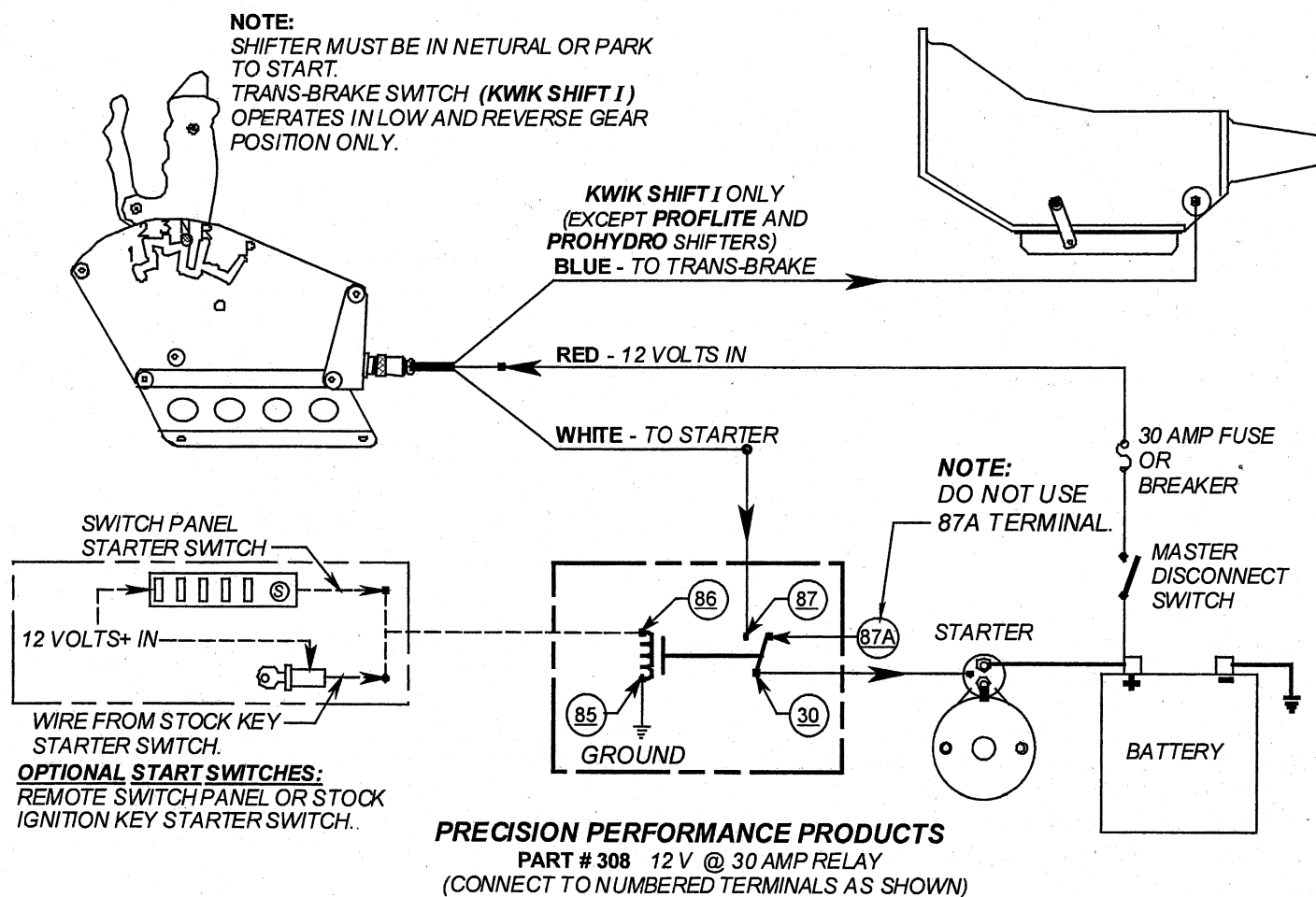


FIG. 3